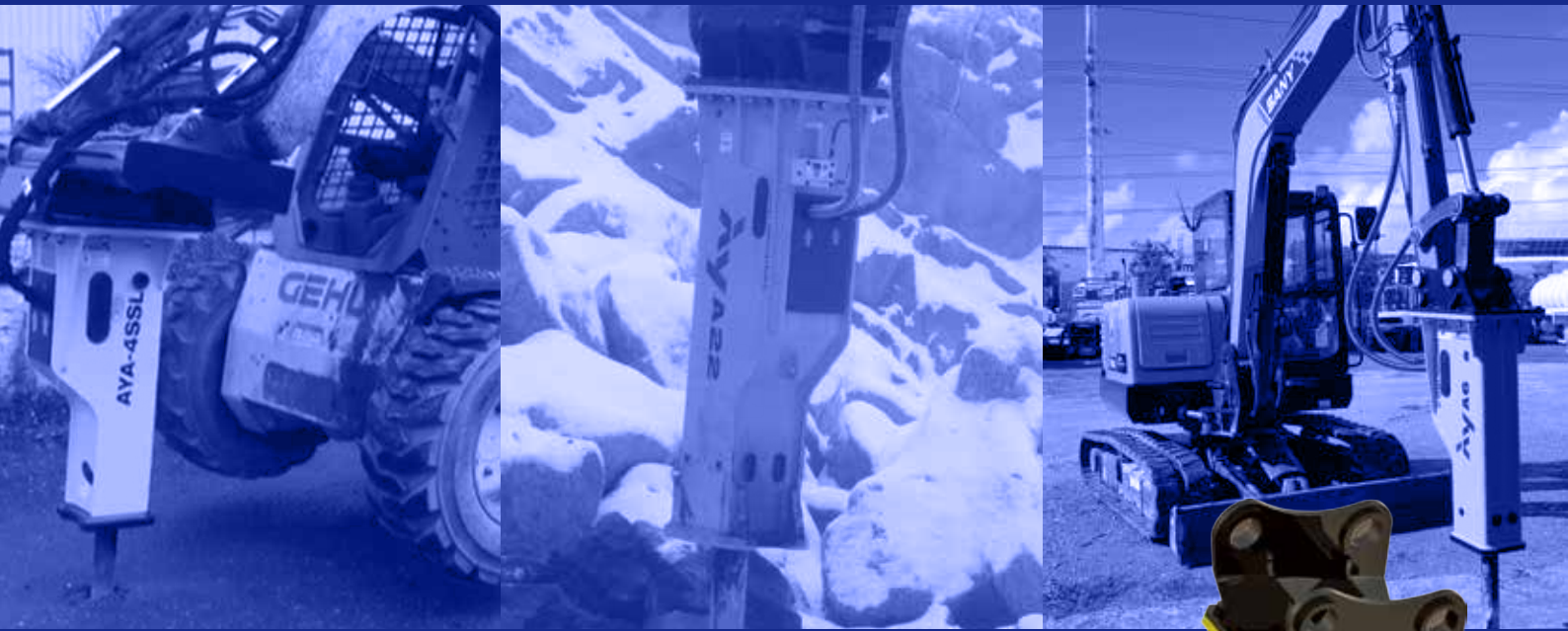


www.ayheavy.com



ALL MIGHTY BREAKER AY HYDRAULIC BREAKER



ABOUT US

Dear Customers :

The most reliable and quality products of AY Hydraulic Breakers(Hammers) series produced by AY Heavy Industries Co., Ltd are core value to customers who wish to buy and put into works of construction, demolition, mining, building industry, bridges, recycling and various projects.

With the spirit of confidentiality, credibility and customer service with cutting edge technology, all members of company are committed to providing fast and top notch service to help customer solve the confronted problem regardless of degree and kind of difficulties.

Our various product offering, experienced engineers and technicians along with service oriented service men committed to providing cutting edge of customer service have resulted in securing and maintaining trustworthy relationship in worldwide market.

Eventually that has created partnership with customers to solve various problem facing day and night at the job sites.

The product ranges what AY has been devoting to and concentrating are Hydraulic Breakers(Hammers), Post Drivers for Excavators and Skid Steer Loaders, Crushers and Quick Couplers.

Sincerely yours,
AY Heavy Industries Co.,Ltd



2015

- Established AY Heavy Industries Co.,Ltd

2015

2017

- Start Export & Dealer contract with U.S.A
- Start Export & Dealer contract with India
- Start Export & Dealer contract with Qatar
- Start Export & Dealer contract with Europe
- Participate an overseas exhibitions (Dubai, India, Bulgaria, etc.)

2017

2019

- Acquired certificate of patent
- Participate an overseas exhibitions (Vietnam, Australia, Indonesia, Singapore)

2019

2021

- Acquired 'Promising Small and Medium Enterprise in Export' by Ministry of SMEs, Republic of Korea
- Head office relocation

2021



2016

- Acquired ISO9001, ISO14001
- Acquired PCT patent cooperation treaty
- Acquired certificate of patent
- Registered as venture company
- Participate an overseas exhibition (India, Czech, Vietnam)

2016

2018

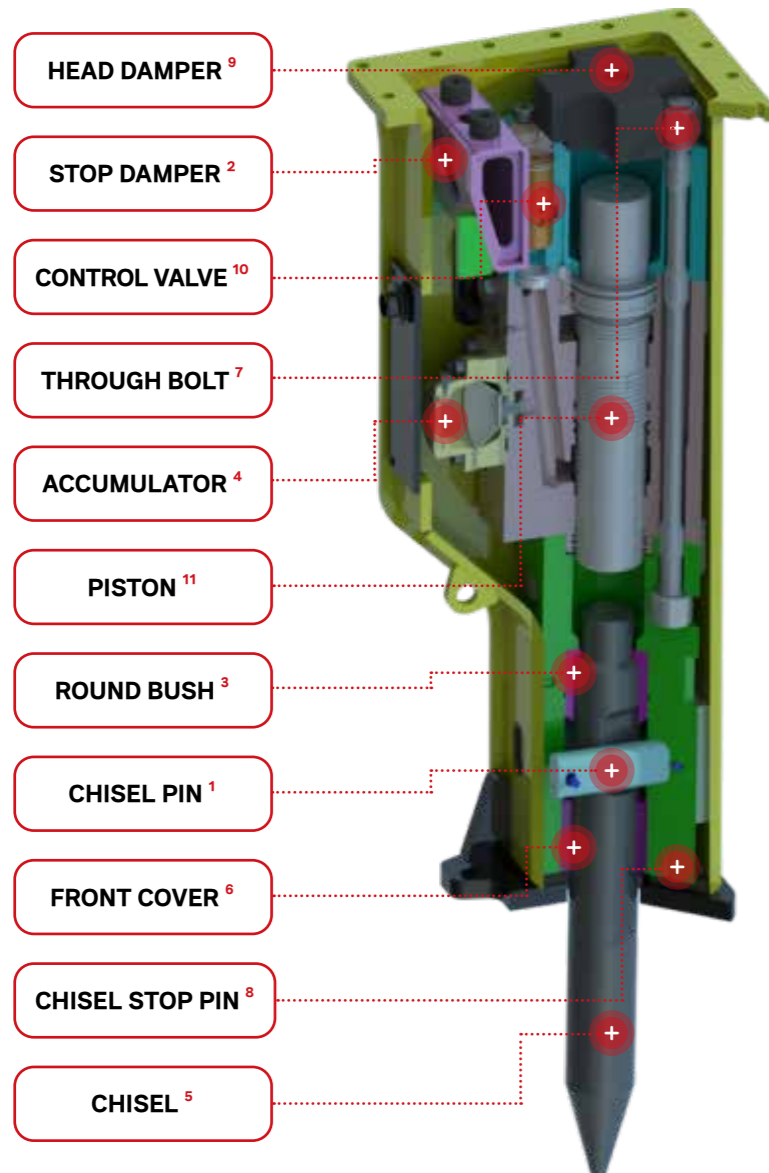
- Selected 'Export Frontier Enterprise
- Acquired CE certificate
- Participate an overseas exhibition (Vietnam, France, Etc.)

2018

2020

- Applied several patent
- Participate an overseas exhibition
- Established new factory

2020



- 1 CHISEL PIN**
Large tool pin more effectively absorbs shock on tool pin

- 2 STOP DAMPER**
Stable support system between power cell and Bracket

- 3 ROUND BUSH**
Improved Durability

- 4 ACCUMULATOR**
Bigger capacity of accumulator enables more powerful and stable hydraulic system

- 5 CHISEL**
Improved Durability

- 6 FRONT COVER**
Improved Durability

- 7 THROUGH BOLT**
Direct bolt fastened type
Large diameter through bolt minimizes failure (longer life time)

- 8 CHISEL STOP PIN**
Improved Durability

- 9 HEAD DAMPER**
Vibration energy absorption

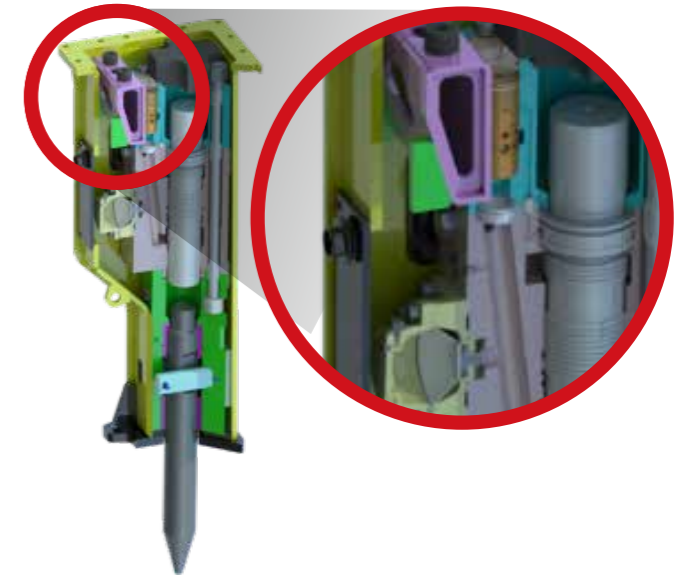
- 10 CONTROL VALVE**
Control valve can be replaced on site with minimized oil leakage

- 11 PISTON**
Maximized impact power and Auto-stop system

Bracket

Stable support system
Between Power cell and Bracket

- Reduced Noise.
- Minimized the screw loosening by vibration.
- Stable operation.
- Longer lifetime of the hydraulic breaker.



Features & Advantages

• Durability

- Longer Chisel Pin & Bigger Through Bolt to Improve Durability
- Minimized Welding Works with Bracket Fabrication Process to Strengthen Durability

• Supplementation

- Prevention of Chisel Stop Pin Looseness
- No Oil Loss When Changing the Control Valve
- Lower Vibrating & Tighter Fastening between Power Cell and Bracket

• Performance

- Applied 2 Step Stroke & Idle Blow Preventing Structure System
- Stronger Impact Power
- Low Noise

• Convenience for Use

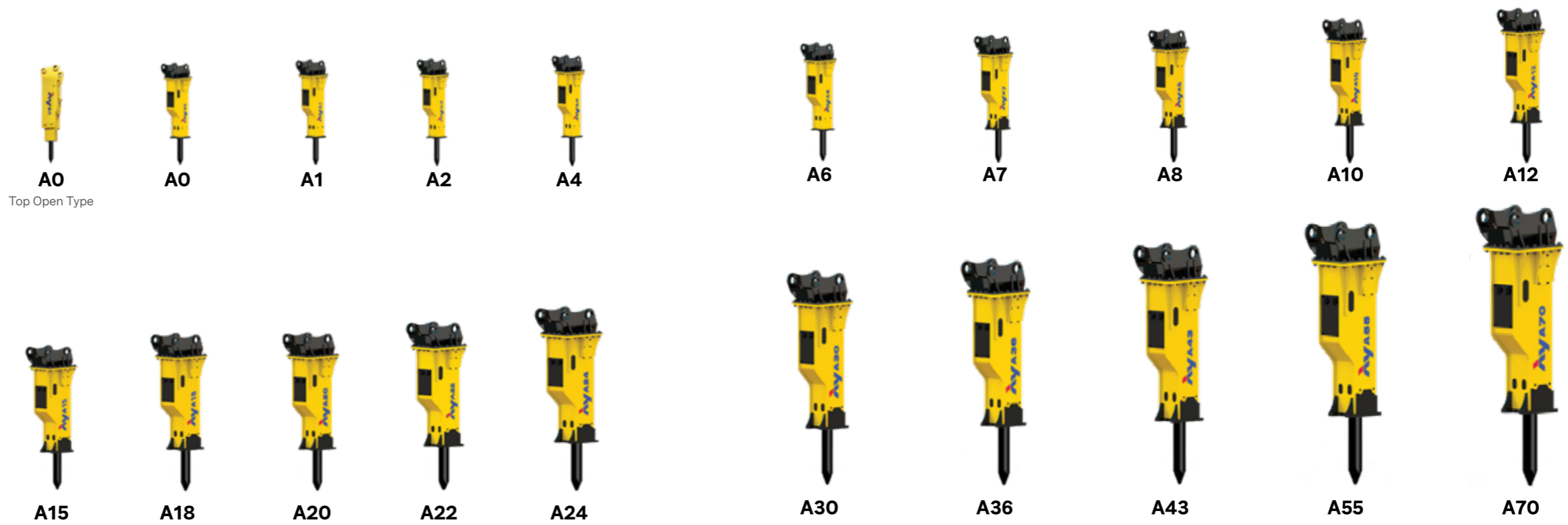
- Operator Oriented Design
- Simple Assembling & Disassembling
- Control Valve can be Replaced on Site with Ease and Speed.
- Easy Maintenance (Time & Cost Saving)
- Longer Life Time of Parts



HYDRAULIC BREAKER

An internal type

Top Box-Type (Low Noise)



Top Open Type

Structure for noise reduction and prevention of the internal vibration.

Description	Unit	A0	A1	A2	A4	A6	A7	A8	A10
Operating Weight	Kg	56	122	190	280	350	510	565	850
	Lbs	123	269	419	618	772	1,124	1,245	1,873
Operating Pressure	Kg/cm ²	60~120	90~120	90~120	110~165	120~165	140~170	140~170	140~180
	Psi	853~1,707	1,280~1,707	1,280~1,707	1,565~2,347	1,707~2,347	1,991~2,418	1,991~2,418	1,991~2,560
Tool Diameter	mm	40	45	57	70	75	80	90	95
	Inch	1.57	1.77	2.24	2.75	2.95	3.14	3.54	3.74
2 nd Relief Setting Pressure	Kg/cm ²	175	175	175	175	175	175	175	210
	Psi	2,489	2,489	2,500	2,500	2,500	2,500	2,500	3,000
Oil Flow	lpm	17~25	15~30	20~70	30~65	38~80	38~90	42~95	65~115
	GPM	4.49~6.60	3.96~7.92	5.2~10.5	7.9~17.1	10~21.1	10~23.7	11~25	17~30
Blow Rate	Bpm Long/s	810~1,200	540~1,000	600~1,490	550~1,300	380~1,100	380~1,000	370~900	360~650
	Bpm Short/s	-	-	-	-	-	490~1,100	480~1,000	600~950
Accumulator Gas pressure	Kg/cm ²	-	-	-	40~50	40~50	40~50	40~50	55~60
	Psi	-	-	-	570~710	570~710	570~710	570~710	780~850
Suitable Carrier	Ton	0.5~2.0	0.8~2.5	1.5~4.0	3.0~6.0	4.5~8.0	4.5~8.8	6.0~10	8.0~12.5
	Lbs	1,102~4,409	1,764~5,512	3,307~8,818	6,614~14,330	9,921~17,637	9,921~19,400	13,228~22,046	17,637~27,558

A12	A15	A18	A20	A22	A24	A30	A36	A43	A55	A70
920	1,170	1,460	1,600	1,820	2,050	2,500	2,800	3,400	3,900	7,100
2,029	2,580	3,218	3,528	4,013	4,519	5,511	6,172	7,495	8,599	15,653
140~180	160~190	160~190	160~190	160~190	160~190	160~190	160~190	160~190	160~190	170~210
1,991~2,560	2,276~2,702	2,276~2,702	2,276~2,702	2,276~2,702	2,276~2,702	2,276~2,702	2,276~2,702	2,276~2,702	2,276~2,702	2,418~2,987
105	115	125	135	135	145	150	155	165	175	205
4.13	4.52	4.92	5.31	5.31	5.70	5.90	6.10	6.49	6.88	8.07
210	210	210	210	210	210	210	230	230	230	250
3,000	3,000	3,000	3,000	3,000	3,000	3,000	3,300	3,300	3,300	3,556
70~125	90~130	100~135	120~155	120~165	145~210	175~245	190~250	230~280	240~320	350~420
18.4~33	23.7~34.3	26.4~35.6	31.6~40.9	31.6~43.5	38.3~55.4	46.2~64.6	50.1~66	60.7~73.9	63.4~84.5	92.4~111
350~600	320~550	320~480	320~480	340~450	250~380	230~400	230~345	270~400	230~330	280~350
600~900	400~700	400~650	400~600	420~550	300~450	270~470	270~410	330~500	270~500	320~500
55~60	55~60	55~60	55~60	55~60	55~60	55~60	55~60	55~60	55~60	55~60
780~850	780~850	780~850	780~850	780~850	780~850	780~850	780~850	780~850	780~850	780~850
10~15	12~18	16~22	18~24	20~26	25~36	24~36	28~42	34~50	40~60	60~100
22,046~33,069	26,455~39,683	35,273~48,501	39,683~52,911	44,092~57,320	52,911~66,139	52,910~79,366	61,729~92,594	74,957~110,231	88,185~132,277	132,277~220,462

HYDRAULIC BREAKER

An internal type
Side-Type



Applicable for the full range of earthmovers.
Easy maintenance.



A0



A1



A2



A4



A6



A7



A8



A10



A12



A15



A18



A20



A22



A24



A30



A36



A43



A55



A70

Description	Unit	A0	A1	A2	A4	A6	A7	A8	A10
Operating Weight	Kg	56	122	190	280	350	510	565	850
	Lbs	123	269	419	618	772	1,124	1,245	1,873
Operating Pressure	Kg/cm ²	60~120	90~120	90~120	110~165	120~165	140~170	140~170	140~180
	Psi	853~1,707	1,280~1,707	1,280~1,707	1,565~2,347	1,707~2,347	1,991~2,418	1,991~2,418	1,991~2,560
Tool Diameter	mm	40	45	57	70	75	80	90	95
	Inch	1.57	1.77	2.24	2.75	2.95	3.14	3.54	3.74
2 nd Relief Setting Pressure	Kg/cm ²	175	175	175	175	175	175	175	210
	Psi	2,489	2,489	2,500	2,500	2,500	2,500	2,500	3,000
Oil Flow	lpm	17~25	15~30	20~70	30~65	38~80	38~90	42~95	65~115
	GPM	4.49~6.60	3.96~7.92	5.2~10.5	7.9~17.1	10~21.1	10~23.7	11~25	17~30
Blow Rate	Bpm Long/s	810~1,200	540~1,000	600~1,490	550~1,300	380~1,100	380~1,000	370~900	360~650
	Bpm Short/s	-	-	-	-	-	490~1,100	480~1,000	600~950
Accumulator Gas pressure	Kg/cm ²	-	-	-	40~50	40~50	40~50	40~50	55~60
	Psi	-	-	-	570~710	570~710	570~710	570~710	780~850
Suitable Carrier	Ton	0.5~2.0	0.8~2.5	1.5~4.0	3.0~6.0	4.5~8.0	4.5~8.8	6.0~10	8.0~12.5
	Lbs	1,102~4,409	1,764~5,512	3,307~8,818	6,614~14,330	9,921~17,637	9,921~19,400	13,228~22,046	17,637~27,558

A12	A15	A18	A20	A22	A24	A30	A36	A43	A55	A70
920	1,170	1,460	1,600	1,820	2,050	2,500	2,800	3,400	3,900	7,100
2,029	2,580	3,218	3,528	4,013	4,519	5,511	6,172	7,495	8,599	15,653
140~180	160~190	160~190	160~190	160~190	160~190	160~190	160~190	160~190	160~190	170~210
1,991~2,560	2,276~2,702	2,276~2,702	2,276~2,702	2,276~2,702	2,276~2,702	2,276~2,702	2,276~2,702	2,276~2,702	2,276~2,702	2,418~2,987
105	115	125	135	135	145	150	155	165	175	205
4.13	4.52	4.92	5.31	5.31	5.70	5.90	6.10	6.49	6.88	8.07
210	210	210	210	210	210	210	230	230	230	250
3,000	3,000	3,000	3,000	3,000	3,000	3,000	3,300	3,300	3,300	3,556
70~125	90~130	100~135	120~155	120~165	145~210	175~245	190~250	230~280	240~320	350~420
18.4~33	23.7~34.3	26.4~35.6	31.6~40.9	31.6~43.5	38.3~55.4	46.2~64.6	50.1~66	60.7~73.9	63.4~84.5	92.4~111
350~600	320~550	320~480	320~480	340~450	250~380	230~400	230~345	270~400	230~330	280~350
600~900	400~700	400~650	400~600	420~550	300~450	270~470	270~410	330~500	270~500	320~500
55~60	55~60	55~60	55~60	55~60	55~60	55~60	55~60	55~60	55~60	55~60
780~850	780~850	780~850	780~850	780~850	780~850	780~850	780~850	780~850	780~850	780~850
10~15	12~18	16~22	18~24	20~26	25~36	24~36	28~42	34~50	40~60	60~100
22,046~33,069	26,455~39,683	35,273~48,501	39,683~52,911	44,092~57,320	52,911~66,139	52,910~79,366	61,729~92,594	74,957~110,231	88,185~132,277	132,277~220,462

HYDRAULIC BREAKER

Post Driver Post Driver



AY Post Driver Series

- AY post drivers are incredibly robust and very useful for construction industries, farmers and anywhere that requires post drivers. Our post drivers are great value for money and engineered with precision.
- Mount our post driver to your hydraulic breaker and you'll have the ultimate combination of motion, power and versatility.
- Easy to maintain _ A truly low-maintenance product, our driver allows for fast and simple disconnection and reconnection.
- This rugged, easy-to-operate post driver universally attaches to most skid loaders or excavators.
- Safety, reliability and productivity are Top priority for AY Heavy industries co.,Ltd. AY goal is to serve you with a quality product.
- Models available for both skid steer and excavators.

• AY Post Driver_Mini Excavator

Description	Unit	A1	A2	A4	A6	A7	A8	A10
Operating Weight	Kg (Lbs)	122 (269)	190 (419)	280 (618)	350 (772)	510 (1,124)	565 (1,245)	850 (1,873)
Operating Pressure	Kg/cm ²	90~120	90~120	110~165	120~165	140~170	140~170	140~180
Oil flow Range	lpm	15~30	20~70	30~65	38~80	38~90	42~95	65~115
Blow Rate	Bpm Long/s	-	-	-	-	380~1,000	370~900	360~650
	bpm Short/s	-	-	-	-	490~1,100	480~1,000	600~950
Tool Diameter	mm	45	57	70	75	80	90	95
2 nd Relief Setting Pressure	Kg/cm ²	175	175	175	175	175	175	210
Accumulator Gas Pressure	Kg/cm ²	-	-	40~50	40~50	40~50	40~50	55~60
Suitable Carrier	Ton	0.8~2.5	1.5~4.0	3.0~6.0	4.5~8.0	4.5~8.8	6.0~10.0	8.0~12.5
	Lbs	1,764~5,512	3,307~8,818	6,614~14,330	9,921~17,637	9,921~17,637	13,228~22,046	17,637~27,558

• AY Post Driver_Skid Loader

Description	Unit	A1SSL	A2SSL	A4SSL	A6SSL	A7SSL
Operating Weight	Kg (Lbs)	200 (440.9)	250 (551)	325 (716)	485 (1,069)	535 (1,179)
Number of Blow (Long Stroke)	Bpm	540~1,000	600~1,490	550~1,300	380~1,100	380~1,000
Required Oil Flow	Lpm (Gpm)	15~30 (3.97~9.25)	20~70 (5.28~18.49)	30~70 (7.92~18.49)	38~110 (10.03~29.05)	45~140 (11.88~36.98)
Operating Pressure	Kg/cm ² (Psi)	90~120 (1,280~1,707)	90~190 (1,280~2,702)	110~190 (1,565~2,702)	120~190 (1,707~2,702)	140~190 (1,991~2,702)
Tool Diameter	mm (Inch)	45 (1.77)	57 (2.24)	70 (2.76)	75 (2.95)	80 (3.15)
Suitable Excavator	Ton (Lbs)	0.8~2.5 (1,764~5,512)	1.5~4.0 (3,307~8,818)	3.0~6.0 (6,614~13,227)	4.5~8.0 (9,921~17,637)	4.5~8.8 (9,921~19,400.67)

HYDRAULIC BREAKER

Skid Loader

AYA-2SSL/4SSL/6SSL/7SSL



AYA-2SSL, 4SSL, 6SSL, 7SSL are used for skid loader.

Below specifications are subject to change without notice.



AYA-2SSL



AYA-4SSL



AYA-6SSL



AYA-7SSL

Description	Unit	A1SSL	A2SSL	A4SSL	A6SSL	A7SSL
Operating Weight	Kg (Lbs)	200 (440.9)	250 (551)	325 (716)	485 (1,069)	535 (1,179)
Number of Blow (Long Stroke)	Bpm	540~1,000	600~1,490	550~1,300	380~1,100	380~1,000
Required Oil Flow	Lpm (Gpm)	15~30 (3.97~9.25)	20~70 (5.28~18.49)	30~70 (7.92~18.49)	38~110 (10.03~29.05)	45~140 (11.88~36.98)
Operating Pressure	Kg/cm ² (Psi)	90~120 (1,280~1,707)	90~190 (1,280~2,702)	110~190 (1,565~2,702)	120~190 (1,707~2,702)	140~190 (1,991~2,702)
Tool Diameter	mm (Inch)	45 (1.77)	57 (2.24)	70 (2.76)	75 (2.95)	80 (3.15)
Suitable Excavator	Ton (Lbs)	0.8~2.5 (1,764~5,512)	1.5~4.0 (3,307~8,818)	3.0~6.0 (6,614~13,227)	4.5~8.0 (9,921~17,637)	4.5~8.8 (9,921~19,400.67)

PRODUCTS

Compactor

Compactor



AY Compactor Series

- AY Compactor has high frequency vibration with highest impact power to make quick work of any compaction task.
- Direct-drive, heavy-duty gear motor
- Rubber shock mounts
- Box section base plate construction
- Angled shock mount suspension
- Thick formed base plate
- Flow control to prevent over speeding
- Virtually zero-maintenance oil bathed bearings
- Readily adaptable to excavator

Item / Model		A7C	A20C	A30C
Impulse Force	Ton	3.7	7.3	11.0
	ft-lb	8.15	16.09	24.25
Vibration Per Minute	vpm	2,200	2,200	2,200
Required Oil Flow	lpm	69	113	179
Operating Pressure	kg/cm ²	Max 138	Max 207	Max 150
	psi	1,963	2,944	2,134
Operating Weight	kg	391	714	905
	Lbs	862	1,574	1,995
Plate Size	mm	620x700	800x900	850x1150
Suitable Excavator	Ton (Lbs)	4~12 (8,818.49~26,455.47)	12~20 (24) (26,455.57~44,092.45 (52,910.94))	14~30 (30,864.71~66,138.67)

Crusher
Crusher

Quick Coupler
Quick Coupler



AY CRUSHER Rotating Crusher Series

- Manufactured in compact type with a large opening width and the weight is reduced.
- The operating efficiency is now maximized by strong power and fast motion.
- The cylinder supplemented demonstrates the dynamic power and superior durability and save the maintenance and repair costs with a fast motion. It maximized the operating efficiency (applied cylinder protection system.)
- The jaw made by durable material and heat treatment is not only light but also prevent from inner abrasion and lengthen the life-span.
- All the injected parts of the grease is finished by special sealing treatment and the grease can be injected smoothly to minimize the abrasion of the pin and bushing.
- The rotating area is heat treated as a ring gear to save the maintenance cost sharply and possible to be used without oil use pressure line by having special break system.

Description	Unit	Spec.
Operating Weight	Kg	2,630
	lbs	5,798
Overall Length	mm	2,624
	Inch	103.31
Overall Width	mm	1,773
	Inch	69.8
Max. Opening Width	mm	1,163
	Inch	45.79
Cutter Length	mm	200
	Inch	7.87
Crushing Force	ton (A)	93
Cutting Force	ton (B)	135
Operating Pressure	ton (a)	317
	Kg/cm ²	320
Oil Flow Rate	psi	4,550
	LPM	250~300
Speed-Up valve	GPM	66.1~79.2
Suitable Excavator	-	Option
Motor Setting Pressure	ton	26~32
	Kg/cm ²	160
Motor Oil Flow Rate	psi	2,275
	LPM	36~40
Revolving Speed	GPM	9.5~10.5
	RPM	13~15
Opening / Closing Normal Time	Opening (sec)	3.59
	Closing (sec)	8.5
	Total Cycle (sec)	12.09
Opening / Closing Speed-Up Time	Opening (sec)	3.59
	Closing (sec)	4.91
	Total Cycle (sec)	8.5
Based Oil Flow	LPM	260

Description	Unit	MC03-IIR	MC05-IIR	MC15-IIR	MC20-IIR	MC25-IIR	MC31-IIR	MC50-IIR
Operating Weight	Kg	290	520	1,000	1,400	1,950	2,680	5,000
	lbs	638	1,144	2,200	3,080	4,290	5,896	11,000
Opening Width	mm	450	500	800	880	980	1,120	1,200
	Inch	17.70	19.68	31.50	34.64	38.58	44.09	47.24
Operating Pressure	Kg/cm ²	210	240	260	280	300	320	320
	psi	2,986	3,412	3,697	3,981	4,226	4,550	4,550
Suitable Excavator	ton	2~3	5~7	13~18	20~22	22~25	28~37	42~47



QUICK COUPLER

Known as a quick hitch, a quick coupler is a heavy-duty industrial component that allows for the fast and efficient changing of buckets and attachments on industrial machines. Without a quick coupler, workers are required to manually drive out attachments, typically using a hydraulic hammer.

A quick coupler, however, simplifies the process, making it an invaluable tool in the industrial workplace.

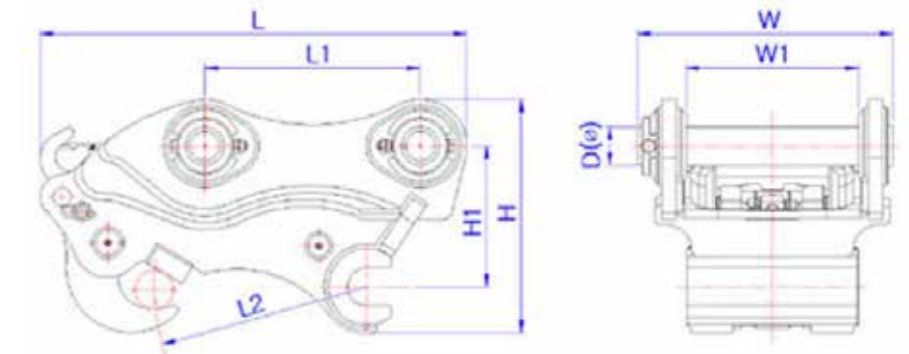
Quick Coupler Operation

In the most basic sense, a quick coupler is a component that's installed on the end of industrial machines and heavy equipment. While it may offer other functions, its primary use is to allow for the rapid change of attachments and tools on the respective machine or equipment. Quick couplers are often used on hydraulic excavators, compact excavators, backhoe loaders, telescopic handlers, wheel loaders, skid-steer loaders, agricultural tractors and more.

• Features

01 Hydraulic Attachments	02 High Performance ability	03 High Impact energy with Low noise	04 100% Genuine Made in Korea product
-----------------------------	--------------------------------	---	--

• Specification



ITEM	Unit	1-2ton	2-4.5ton	4.5-7ton	7-18ton	18-36ton	36-50ton
Overall Length (L)	mm	306~307	475	529.7	585~876	936~1,103	1,130~1,135
Overall Height (H)	mm	230~240	268~273	292	317~485	485~610	610~654.5
Overall Width (W)	mm	184~192	224~227	264	307~495	533.5~998	668
Installation Length (L1)	mm	85~101	187~192	234	275~410	460~550	577
Mounting Length (L2)	mm	85~101	180~192	230 (220~270)	275~410	460~550	577
Height Between Axeles (H1)	mm	159~167	165~170	180	185~285	285~360	360~380
Installation Width (W1)	mm	95~100	123~125	150	195~308	332~432	432
Pin Diameter Φ	mm	25~30	30~40	45~50	50~80	80~100	100~120

Technology Certificates

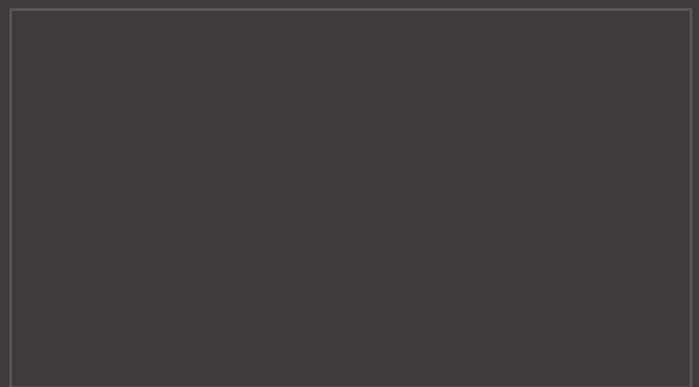


9001 : 2015



14001 : 2015

HYDRAULIC BREAKER / COMPACTOR / CRUSHER / POST DRIVER / QUICK COUPLER



+82-31-893-8912 ayinfo@ayheavy.com



#214 Prima BizTower, 24, Homaesil-ro 90beon-gil,
Gwonseon-gu, Suwon-si, Gyeonggi-do, Republic of Korea

Copyright©2022 AY Heavy Industries All Right Reserved.